

MONTHLY MEMBERSHIP PROGRESS REPORT

District 16 J

Results as of: 1/31/2024

GMT:

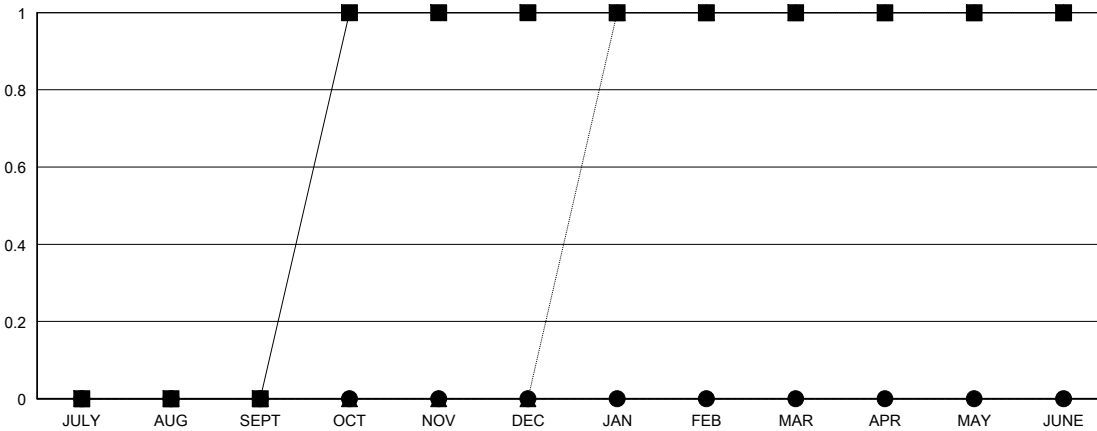
LOCATION NEW JERSEY

GMT CA

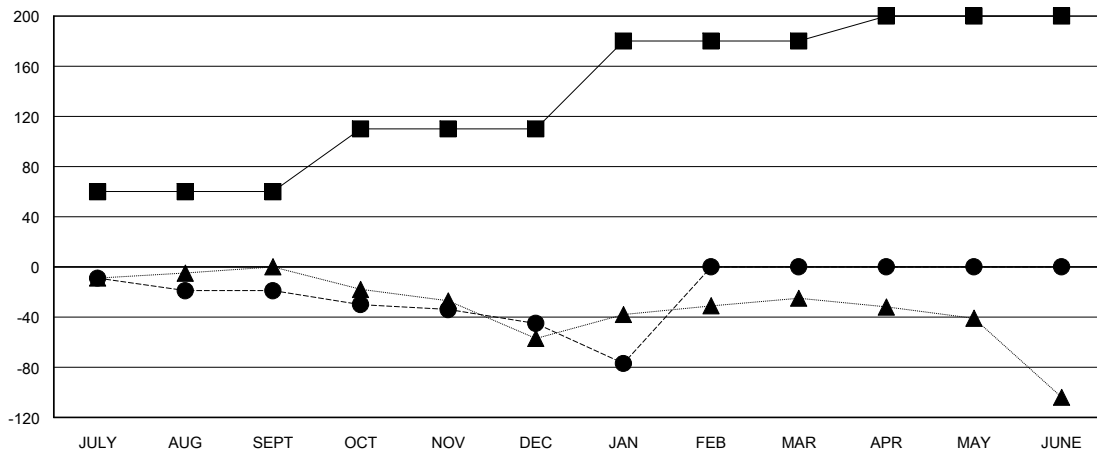
Clubs			
RESULTS FOR 2023-2024			
QUARTER	NEW CLUB GOAL	NEW CLUBS	DROPPED CLUBS
JULY/AUG/SEPT	0	0	1
OCT/NOV/DEC	1	0	2
JAN/FEB/MAR	0	0	1
APR/MAY/JUNE	0	0	0

Members			
RESULTS FOR 2023-2024			
QUARTER	MEMBER GROWTH NET GOAL	MEMBER GROWTH ACTUAL	DROPPED MEMBERS ACTUAL (including transfers)
JULY/AUG/SEPT	60	27	36
OCT/NOV/DEC	50	39	62
JAN/FEB/MAR	70	3	35
APR/MAY/JUNE	20	0	0

GOALS AND ACTUAL NEW CLUBS CUMULATIVE



GOALS AND ACTUAL MEMBERS CUMULATIVE



DROPPED CLUBS: 4	18 CLUBS OF 58 ADDED 1 OR MORE NEW MEMBERS	GENDER DISTRIBUTION	
		MALE 788 (62.84%)	FEMALE 466 (37.16%)
DROPPED MEMBERS		CLICK HERE FOR CUMULATIVE MEMBERSHIP DATA	TOTAL FAMILY UNIT MEMBERS 294
DECEASED 6	CLUB CANCELLED 34		FAMILY MEMBERS PAYING HALF DUES 154
OTHER 93	TOTAL 133		